



Stormwater CIP Highlights & Map

City Council is considering several levels of funding for stormwater projects starting in Fiscal Year 2017/2018. The projects below are listed in order of priority. The check boxes indicate which projects are included in the four funding levels under consideration.

Project Key

✓ = Full Funding ✓ * = Partial Funding

Projects	Included With Funding Level			
	\$ 20 M	\$ 40 M	\$ 64 M	\$ 93 M
1. Whaley Street & Main Street Upgrade	✓	✓	✓	✓
2. Harlem Heights Drainage Project	✓	✓	✓	✓
3. MLK Jr. Park/ Greg Property Detention	✓	✓	✓	✓
4. Wallace Street Improvements	✓	✓	✓	✓
5. Shandon Phase 2	✓	✓	✓	✓
6. Penn Branch	✓*	✓	✓	✓
7. Randall Avenue	✓	✓	✓	✓
8. Gregg Street & Gervais Street, Phase 2	✓*	✓*	✓	✓
9. Sumter/ Catawba Detention		✓	✓	✓
10. Taylor/ Washington 60" Improvement		✓	✓	✓
11. Whaley Street At Railroad Crossing		✓	✓	✓
12. Stream Restoration Along Rocky Branch		✓	✓	✓
13. Eightmile Branch From Danfield To Chinaberry		✓	✓	✓
14. 4000 Old Leesburg Road		✓	✓	✓
15. Windsor Hill Evaluation & Flood Study		✓	✓	✓
16. 800 King & Queen Streets From Lee To Preston		✓	✓	✓
17. Sumter & Marion Streets Bio-retention Bumpouts		✓	✓	✓
18. Gills Creek Debris Removal		✓	✓	✓
19. Project Management For Bond Projects			✓*	✓
20. Smith Branch Drainage Area – Tier 1 Projects			✓*	✓
21. Rocky Branch Watershed Plan – Tier 1 Projects			✓*	✓
22. Smith Branch Drainage Area – Tier 2 Projects				✓
23. Rocky Branch Watershed Plan – Tier 2 Projects				✓

** Note: This does not include all projects. Work plan subject to change*

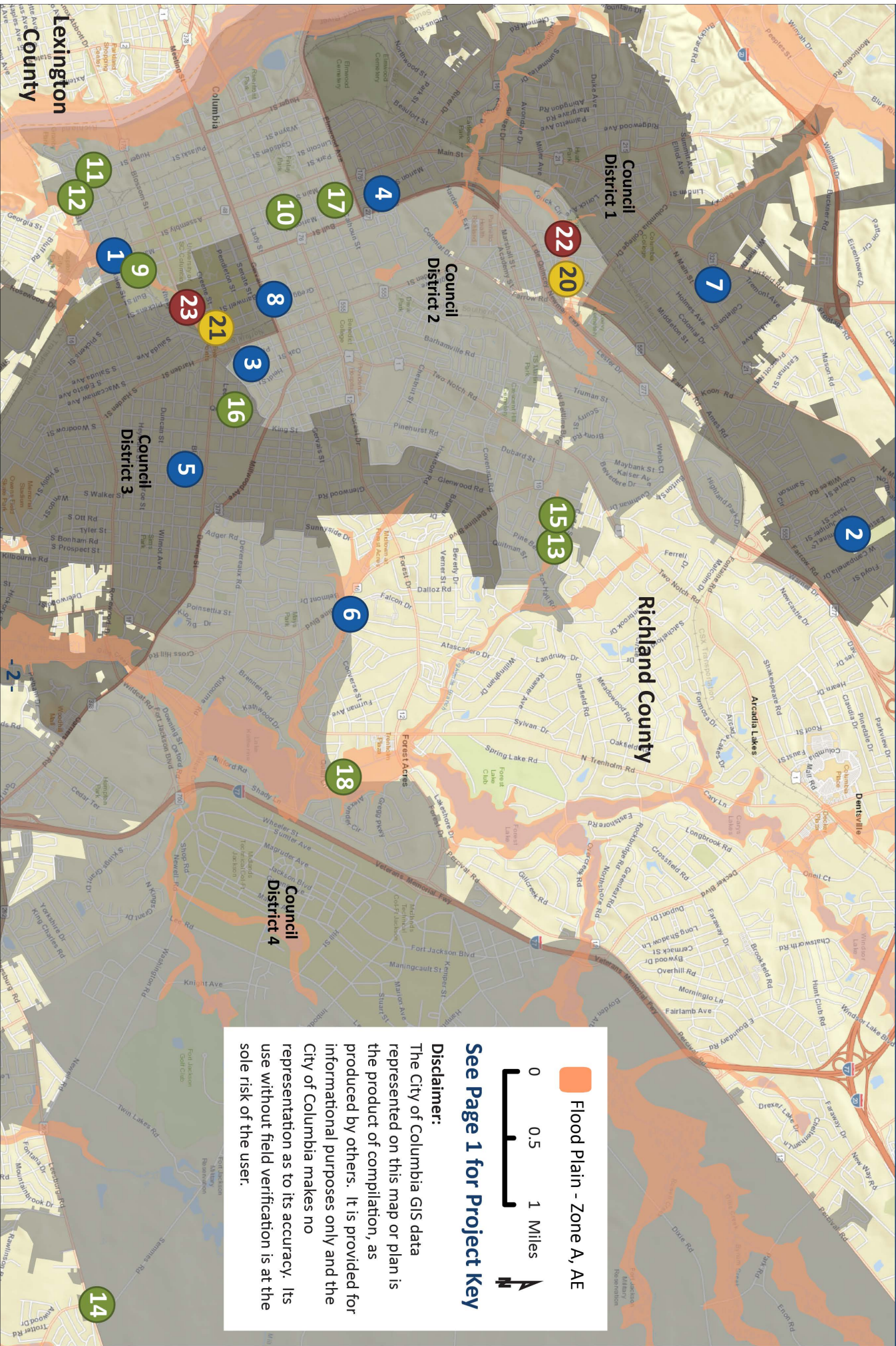




We Are Columbia

Stormwater CIP Highlights & Map

Fiscal Year 2017/2018



 Flood Plain - Zone A, AE



See Page 1 for Project Key

Disclaimer:

The City of Columbia GIS data represented on this map or plan is the product of compilation, as produced by others. It is provided for informational purposes only and the City of Columbia makes no representation as to its accuracy. Its use without field verification is at the sole risk of the user.