



# Water & Sewer CIP Highlights & Map

## Project Key

### Major Capital Improvement Projects\*

#### Water System

#### Sewer System

#### COMPLETED

1. Canal Water Treatment Plant high service & raw water pump improvements
2. Broad River Rd water line
3. Chapin booster pump station

24. Crane Creek sewer bypass
25. Innovista District infrastructure upgrades (Phases 1 & 2)
26. Major pump station upgrades: Broad River, North Columbia, Saluda River, West Columbia

#### TO BE COMPLETED FY 16/17

4. Canal Water Treatment Plant raw water, dredging & sedimentation basin improvements
5. Lake Murray Water Treatment Plant disinfection & pumping improvements
6. AMR / AMI feasibility study
7. Chapin waterline improvements
8. Water tanks: Genstar, Killian Rd, Ballantine

27. Metro Wastewater Treatment Plant anaerobic digester rehabilitation
28. Major sewer system assessment
29. Sewer pump station upgrades: Clearwater, Colonial Life, Meadowland, Prescott Manor, Shady Lane, Swandale, Yacht Cove

#### BEGINNING FY 16/17

9. Canal Water Treatment Plant clearwell & high service pump improvements
10. AMR / AMI implementation work plan
11. Hardscrabble Rd water improvements
12. Longtown Rd West water main

30. Metro Wastewater Treatment Plant biosolids dewatering improvements
31. Metro Wastewater Treatment Plant liquid treatment train upgrades
32. Crane Creek sewer improvements
33. Sewer pump station upgrades: Animal Shelter, Bendale, Food Lion, Harbison #2, Mallard Point, Starlite

### Nighborhood Capital Improvement Projects\* Beginning FY 16/17

#### Water System

#### Sewer System

13. Booker Washington Heights water improvements
14. Covenant Rd & Harrison Rd area water improvements
15. Earlwood area water improvements
16. Lake Katherine water improvements
17. Lincolnshire area water improvements
18. North Main streetscaping
19. Rosewood area water quality improvements
20. Satchel Ford area water improvements
21. Shop Rd water main extension
22. Sumter St (Cottontown) water improvements
23. Washington Park waterline replacement

34. Lake Katherine from Gills Creek to Beltline sewer rehab
35. North Main streetscaping
36. Olympia area sewer improvements
37. Richard Street sewer extension
38. Rocky Branch sewer evaluation study
39. Rosewood Dr south to Gills Creek sewer rehab
40. Saluda Basin sewer rehab
41. Shop Rd sewer extension
42. Smith Branch sewer evaluation study
43. Trenholm Rd & Shandon areas sewer rehab

**\* Note: This does not include all projects. Work plan subject to change.**

The complete FY16/17 Water & Sewer CIP can be found online at

[www.columbiasc.net/utilities-engineering](http://www.columbiasc.net/utilities-engineering).

Additional sewer projects can be found online at [www.CleanWater2020.com](http://www.CleanWater2020.com).



Clean Water 2020

Columbia's Clear Vision For Clean Water

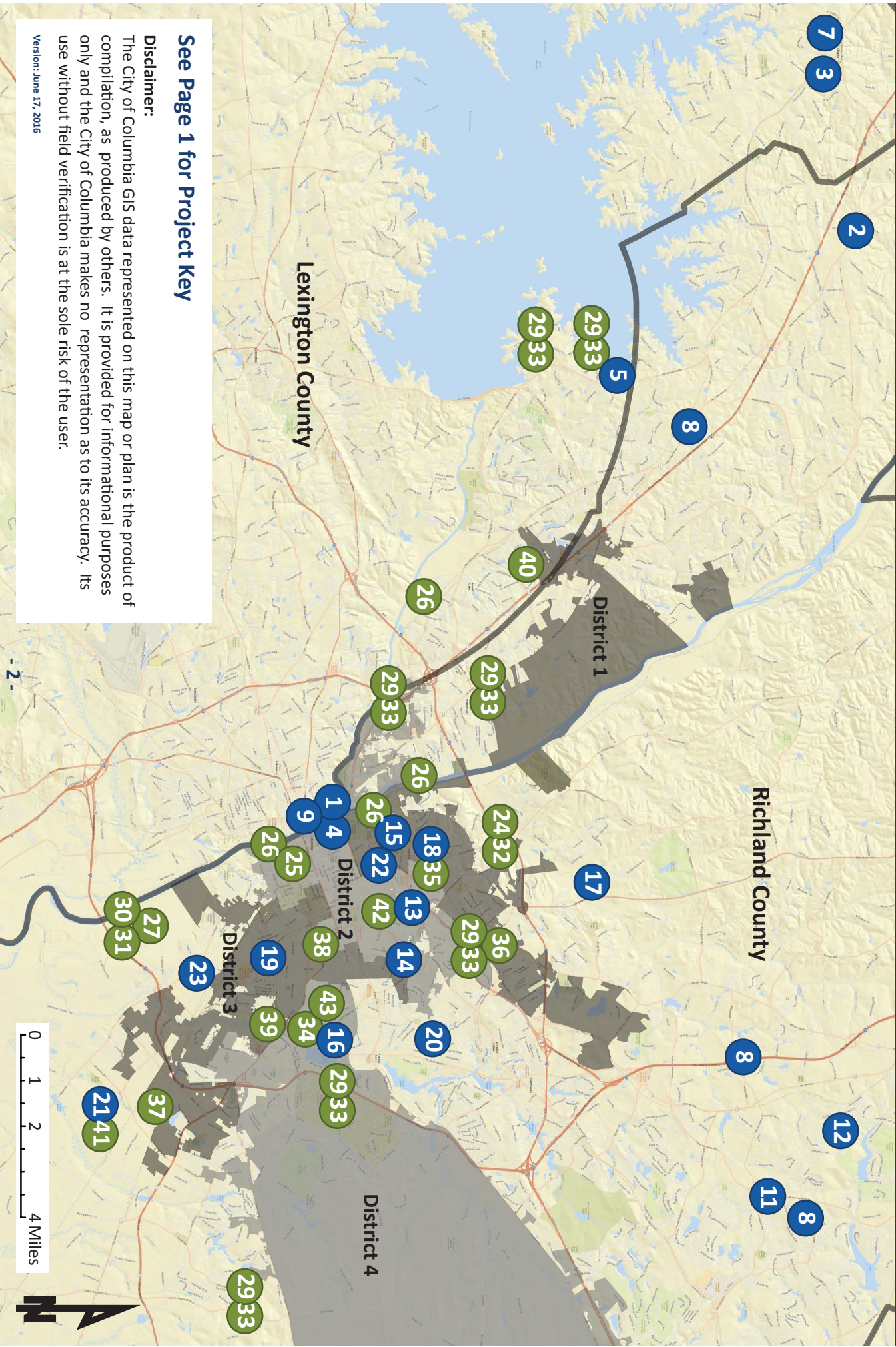


Version: June 17, 2016



# Water & Sewer CIP Highlights & Map

## Fiscal Year 2016/2017



### See Page 1 for Project Key

#### Disclaimer:

The City of Columbia GIS data represented on this map or plan is the product of compilation, as produced by others. It is provided for informational purposes only and the City of Columbia makes no representation as to its accuracy. Its use without field verification is at the sole risk of the user.

Version: June 17, 2016