

Kinley Creek Monitoring Sites

Monitoring Data Summary for October 30th, 2020 – December 1st, 2020

Data Gaps

- At the KINA and KINB stations, the turbidity and DO data was not recorded during this monitoring period because the sensors were out for repairs.

SCDHEC Standards

- None of the Kinley Creek monitoring stations recorded any pH readings outside of the acceptable SCDHEC range of 6 to 8.5.

Storm Events

- The rain gauge along Kinley Creek recorded 8 storm events during this deployment period that resulted in a total of 3.2 inches of precipitation.
- Both the KINA and KINB stations recorded typical storm response patterns during this monitoring period.

Potential Illicit Discharges and Abnormal Events

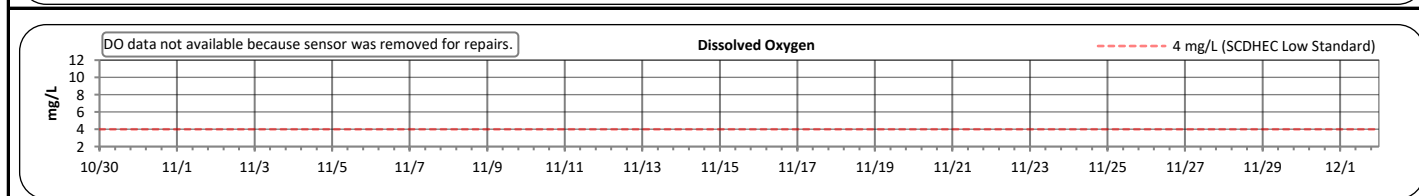
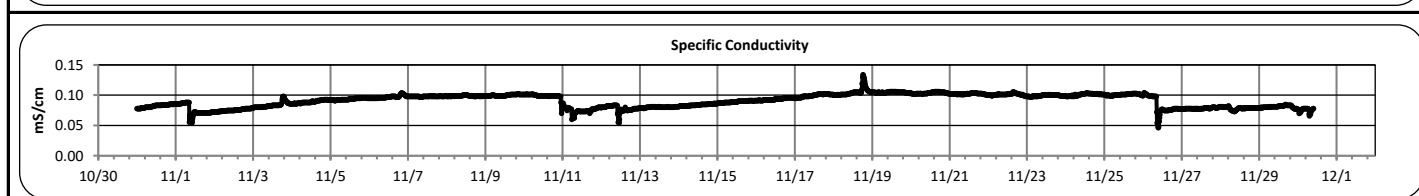
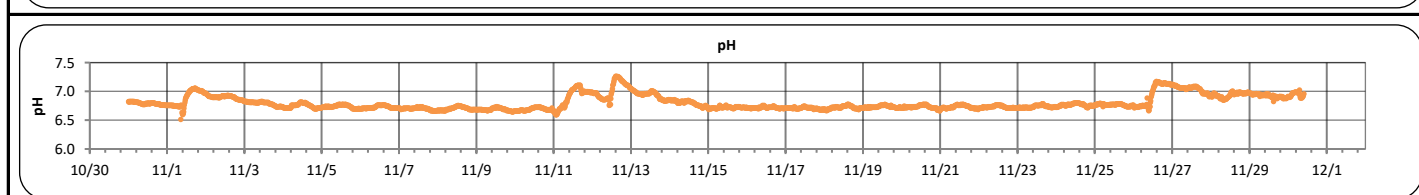
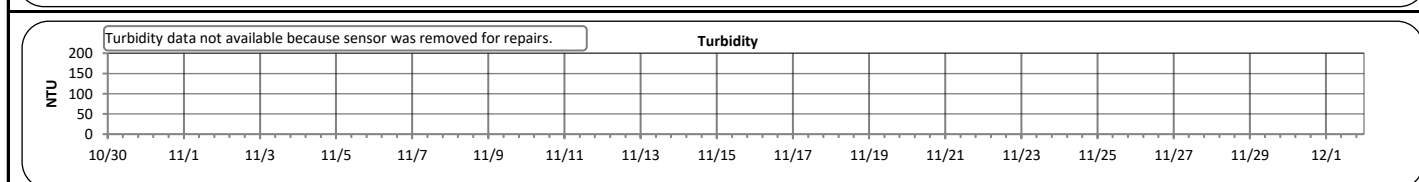
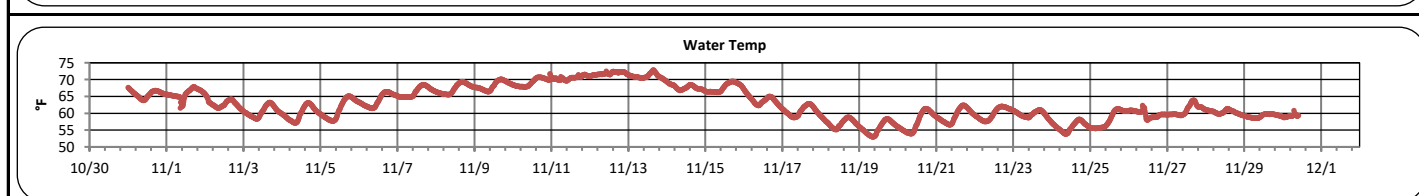
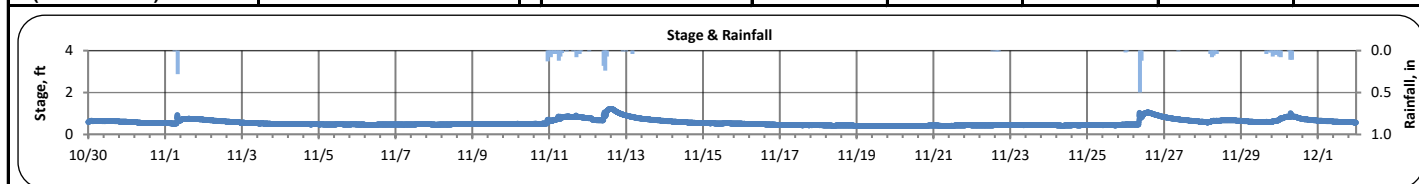
- At the KINA station, the specific conductivity increased on November 18th, which may have been the result of an illicit discharge.
- At the KINB station, the specific conductivity increased on November 9th and November 26th, which may have been the result of illicit discharges.

Flow Measurements

- No flow measurements were taken in the Kinley Creek watershed during this monitoring period.

Kinley Creek A (October 30, 2020 - December 1, 2020)

PARAMETER	DESCRIPTION	CONTINUOUS WATER QUALITY PARAMETERS:	SUMMARY STATISTICS				
			MINIMUM OBSERVED	MAXIMUM OBSERVED	MEDIAN OBSERVED	MEAN OBSERVED	STANDARD DEVIATION
STREAM NAME:	Kinley Creek	STAGE (FT):	0.4	1.2	0.5	0.6	0.1
LOCATION:	Longhorn Steakhouse	TEMPERATURE (°F):	53	73	62	63	5
ADDRESS:	171 Harbison Blvd Columbia, SC 29212	TURBIDITY (NTU):	-	-	-	-	-
COORDINATES:	34.069897, -81.164592	pH:	6.5	7.3	6.8	6.8	0.1
TMDL/IMPAIRMENT:	Fecal Coliform	SPECIFIC CONDUCTIVITY (mS/cm):	0.046	0.134	0.094	0.091	0.011
NEIGHBORING LANDUSE:	Residential and commercial	DISSOLVED OXYGEN (mg/L):	-	-	-	-	-
SPATIAL LOCATION:	Most upstream site						
TOTAL NO. STORMS OVER 0.1 INCH:	8						
MAX. DAILY RAINFALL:	0.6 inches						
TOTAL RAINFALL (FOR PERIOD):	3.2 inches						



Note: Data gaps appear when the sonde is removed for calibration or when the flow depth is below the sensors

**Continuous Water Quality
Monitoring Periodic Report**

Kinley Creek A (October 30, 2020 - December 1, 2020)

Explanation of Statistics:

MINIMUM OBSERVED	The minimum of the values recorded by the datasonde in 15 minute intervals.
MAXIMUM OBSERVED	The maximum of the values recorded by the datasonde in 15 minute intervals.
MEDIAN OBSERVED	The median of all the values recorded by the datasonde in 15 minute intervals.
MEAN OBSERVED	The average of all the values recorded by the datasonde in 15 minute intervals.
STANDARD DEVIATION	The standard deviation of all the values recorded by the datasonde in 15 minute intervals.

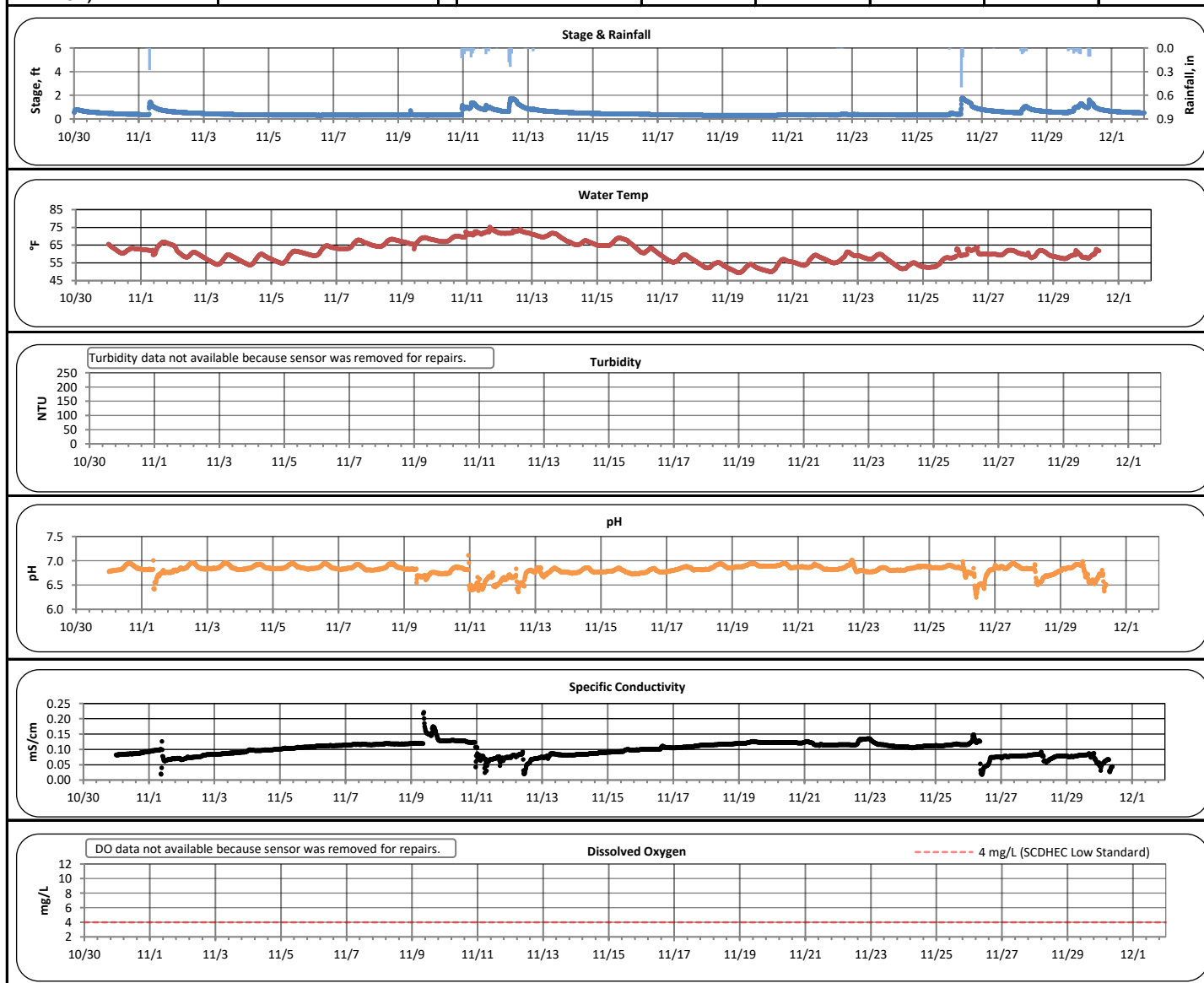
Grab Sample Data:

Analyte (units)	Sample 1		Sample 2		Sample 3		Sample 4	
	11/9/2020		11/12/2020		11/12/2020		11/12/2020	
	Time	Results	Time	Results	Time	Results	Time	Results
<i>Escherichia coli</i> (MPN/100mL)	10:30	2,306	9:31	126	10:55	15,400	12:30	11,500
Total Suspended Solids (mg/L)			9:31	5.8	10:55	19.2	12:30	28.5
Total Phosphorus (mg/L)			9:31	0.075	10:55	0.14	12:30	0.13
Total Nitrogen (mg/L)			9:31	0.69	10:55	0.98	12:30	0.58

Notes: Sample 1 was taken during dry weather conditions. Samples 2-4 were taken during wet weather conditions.

Kinley Creek B (October 30, 2020 - December 1, 2020)

PARAMETER	DESCRIPTION	CONTINUOUS WATER QUALITY PARAMETERS:	SUMMARY STATISTICS				
			MINIMUM OBSERVED	MAXIMUM OBSERVED	MEDIAN OBSERVED	MEAN OBSERVED	STANDARD DEVIATION
STREAM NAME:	Kinley Creek	STAGE (FT):	0.3	1.8	0.4	0.5	0.3
LOCATION:	Broken Hill Rd	TEMPERATURE (°F):	49	75	60	61	6
ADDRESS:	609 Broken Hill Rd Columbia, SC 29212	TURBIDITY (NTU):	-	-	-	-	-
COORDINATES:	34.06635, -81.159986	pH:	6.3	7.1	6.8	6.8	0.1
TMDL/IMPAIEMENT:	Fecal Coliform	SPECIFIC CONDUCTIVITY (mS/cm):	0.018	0.222	0.105	0.100	0.022
NEIGHBORING LANDUSE:	Residential and commercial	DISSOLVED OXYGEN (mg/L):	-	-	-	-	-
SPATIAL LOCATION:	Most downstream site						
TOTAL NO. STORMS OVER 0.1 INCH:	8						
MAX. DAILY RAINFALL:	0.6 inches						
TOTAL RAINFALL (FOR PERIOD):	3.2 inches						



Note: Data gaps appear when the sonde is removed for calibration or when the flow depth is below the sensors

**Continuous Water Quality
Monitoring Periodic Report**

Kinley Creek B (October 30, 2020 - December 1, 2020)

Explanation of Statistics:

MINIMUM OBSERVED	The minimum of the values recorded by the datasonde in 15 minute intervals.
MAXIMUM OBSERVED	The maximum of the values recorded by the datasonde in 15 minute intervals.
MEDIAN OBSERVED	The median of all the values recorded by the datasonde in 15 minute intervals.
MEAN OBSERVED	The average of all the values recorded by the datasonde in 15 minute intervals.
STANDARD DEVIATION	The standard deviation of all the values recorded by the datasonde in 15 minute intervals.

Sampled Data:

Analyte (units)	Sample 1		Sample 2		Sample 3		Sample 4	
	11/9/2020		11/12/2020		11/12/2020		11/12/2020	
	Time	Results	Time	Results	Time	Results	Time	Results
<i>Escherichia coli</i> (MPN/100mL)	10:40	3,058	9:52	2,108	11:12	6,152	12:47	6,260
Total Suspended Solids (mg/L)			9:52	105	11:12	47.7	12:47	30
Total Phosphorus (mg/L)			9:52	0.15	11:12	0.1	12:47	0.12
Total Nitrogen (mg/L)			9:52	1.07	11:12	0.72	12:47	0.68

Notes: Sample 1 was taken during dry weather conditions. Samples 2-4 were taken during wet weather conditions.