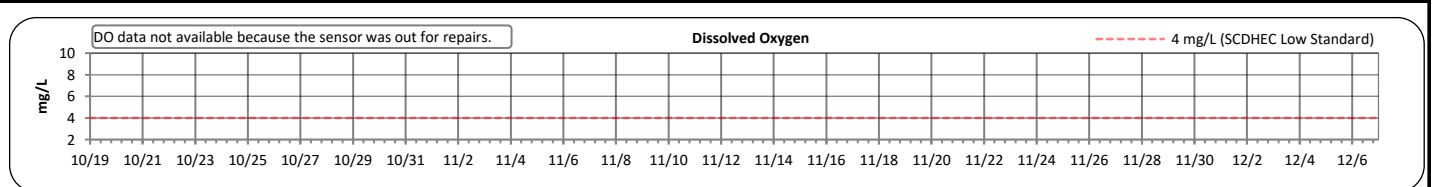
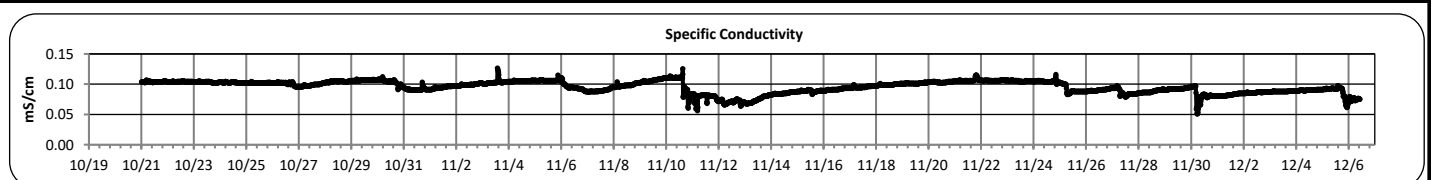
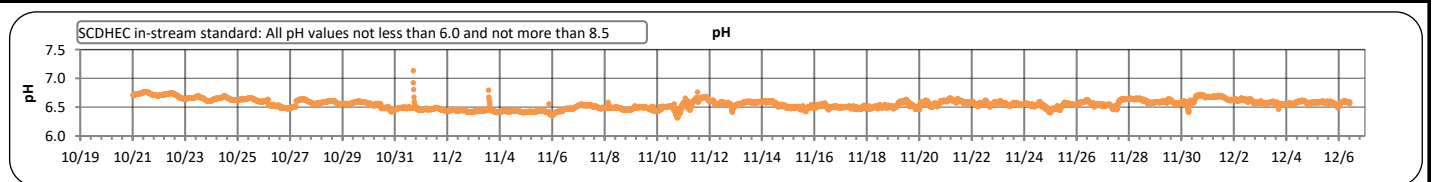
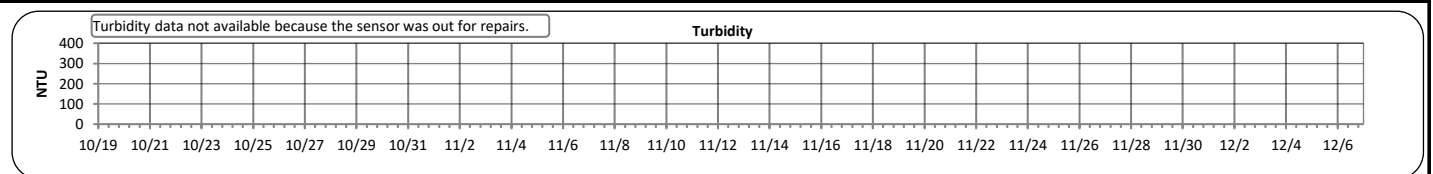
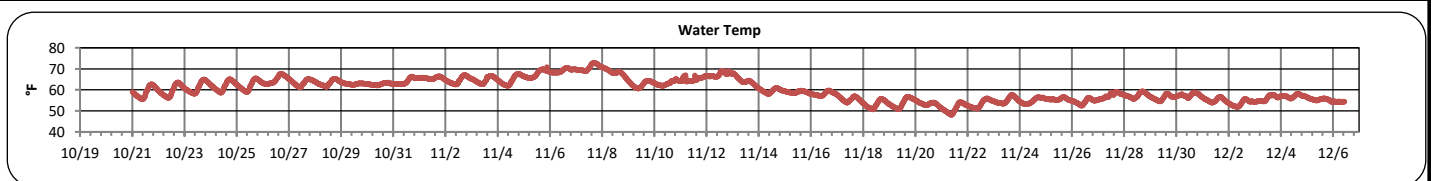
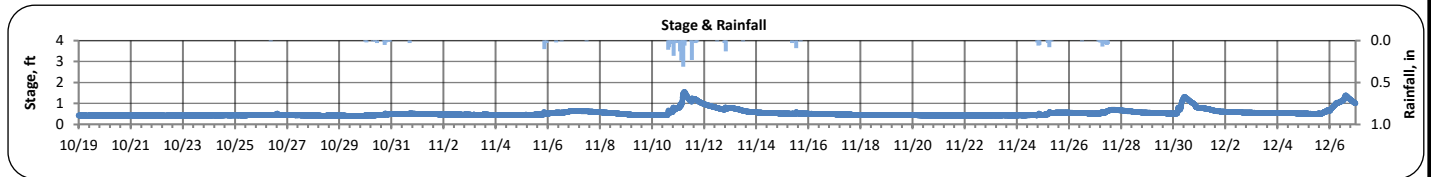


Continuous Water Quality Monitoring Periodic Report

Kinley Creek A (October 19, 2022 - December 6, 2022)

PARAMETER	DESCRIPTION	CONTINUOUS WATER QUALITY PARAMETERS:	SUMMARY STATISTICS				
			MINIMUM OBSERVED	MAXIMUM OBSERVED	MEDIAN OBSERVED	MEAN OBSERVED	STANDARD DEVIATION
STREAM NAME:	Kinley Creek	STAGE (FT):	0.4	1.6	0.5	0.5	0.1
LOCATION:	Longhorn Steakhouse	TEMPERATURE (°F):	48	73	59	60	5
ADDRESS:	171 Harbison Blvd Columbia, SC 29212	TURBIDITY (NTU):	-	-	-	-	-
COORDINATES:	34.069897, -81.164592	pH:	6.3	7.1	6.6	6.6	0.1
TMDL/IMPAIRMENT:	Fecal Coliform	SPECIFIC CONDUCTIVITY (mS/cm):	0.051	0.127	0.097	0.095	0.010
NEIGHBORING LANDUSE:	Residential and commercial	DISSOLVED OXYGEN (mg/L):	-	-	-	-	-
SPATIAL LOCATION:	Most upstream site						
TOTAL NO. STORMS OVER 0.1 INCH:	8						
MAX. DAILY RAINFALL:	1.1 inches						
TOTAL RAINFALL (FOR PERIOD):	2.9 inches						



Note: Data gaps appear when the sonde is removed for calibration or when the flow depth is below the sensors

REPORT GENERATED ON 1/30/2022

**Continuous Water Quality
Monitoring Periodic Report**

Kinley Creek A (October 19, 2022 - December 6, 2022)

Explanation of Statistics:

MINIMUM OBSERVED	The minimum of the values recorded by the datasonde in 15 minute intervals.
MAXIMUM OBSERVED	The maximum of the values recorded by the datasonde in 15 minute intervals.
MEDIAN OBSERVED	The median of all the values recorded by the datasonde in 15 minute intervals.
MEAN OBSERVED	The average of all the values recorded by the datasonde in 15 minute intervals.
STANDARD DEVIATION	The standard deviation of all the values recorded by the datasonde in 15 minute intervals.

Sampled Data:

Analyte (units)	Sample 1		Sample 2					
	11/10/2022		11/10/2022					
	Time	Results	Time	Results				
<i>Escherichia coli</i> (MPN/100mL)	14:36	538	16:28	9,222				
Total Suspended Solids (mg/L)								
Total Phosphorus (mg/L)								
Total Nitrogen (mg/L)								

All samples were collected during wet weather conditions.

Notes:

Data Gaps

Turbidity and dissolved oxygen data was not collected during this monitoring period at KINA due to sensor repairs.

Potential Illicit Discharges and Abnormal Events:

Specific conductivity and pH increased on 10/30 and 11/3, which may have been the result of illicit discharges.

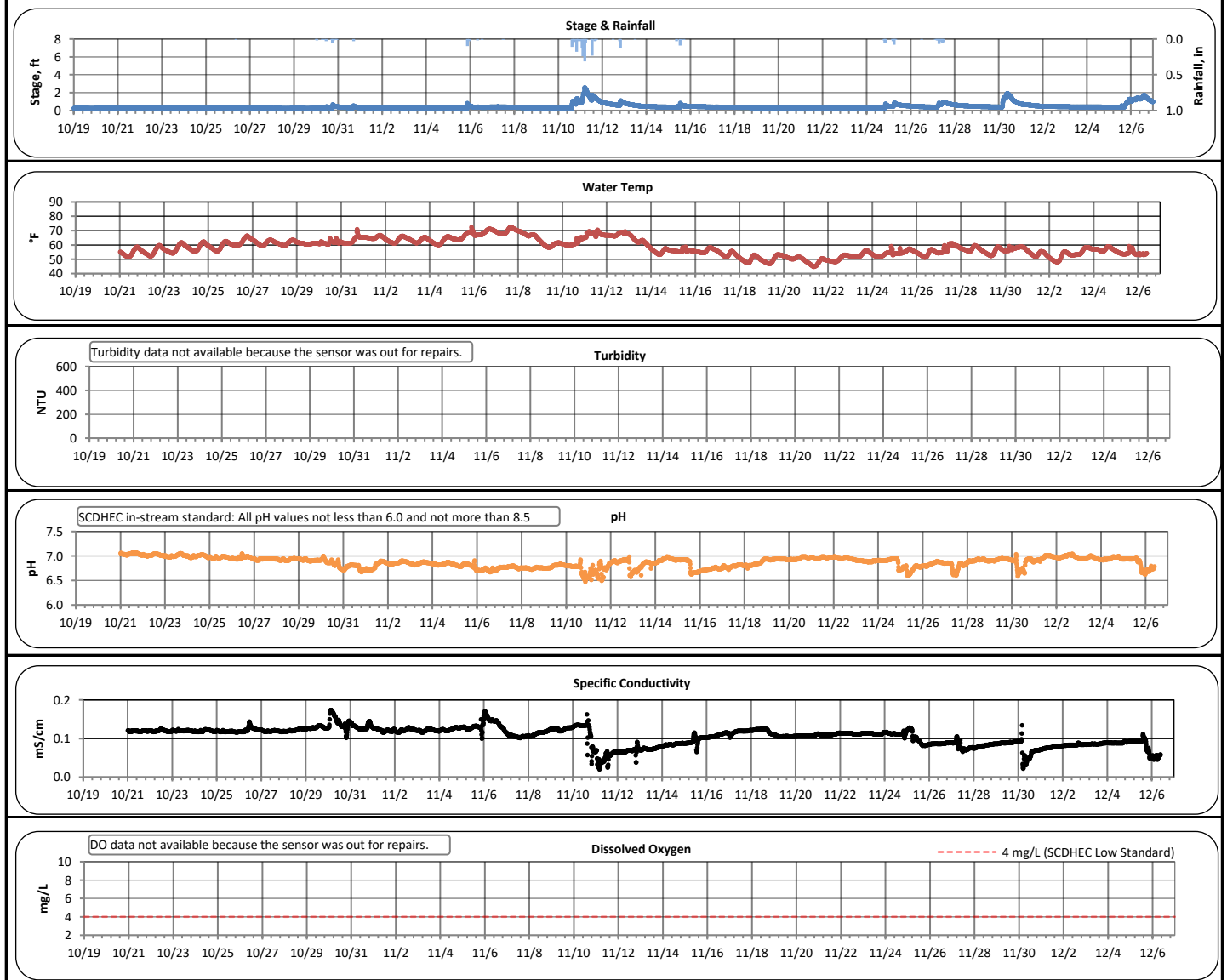
Note: Data gaps appear when the sonde is removed for calibration or when the flow depth is below the sensors

REPORT GENERATED ON 1/30/2022

Continuous Water Quality Monitoring Periodic Report

Kinley Creek B (October 19, 2022 - December 6, 2022)

PARAMETER	DESCRIPTION	CONTINUOUS WATER QUALITY PARAMETERS:	SUMMARY STATISTICS				
			MINIMUM OBSERVED	MAXIMUM OBSERVED	MEDIAN OBSERVED	MEAN OBSERVED	STANDARD DEVIATION
STREAM NAME:	Kinley Creek	STAGE (FT):	0.2	2.6	0.3	0.4	0.2
LOCATION:	Broken Hill Rd	TEMPERATURE (°F):	45	72	58	58	6
ADDRESS:	609 Broken Hill Rd Columbia, SC 29212	TURBIDITY (NTU):	-	-	-	-	-
COORDINATES:	34.06635, -81.159986	pH:	6.5	7.1	6.9	6.9	0.1
TMDL/IMPAIRMENT:	Fecal Coliform	SPECIFIC CONDUCTIVITY (mS/cm):	0.020	0.174	0.113	0.106	0.023
NEIGHBORING LANDUSE:	Residential and commercial	DISSOLVED OXYGEN (mg/L):	-	-	-	-	-
SPATIAL LOCATION:	Most downstream site						
TOTAL NO. STORMS OVER 0.1 INCH:	8						
MAX. DAILY RAINFALL:	1.1 inches						
TOTAL RAINFALL (FOR PERIOD):	2.9 inches						



Note: Data gaps appear when the sonde is removed for calibration or when the flow depth is below the sensors

REPORT GENERATED ON 1/30/2022

**Continuous Water Quality
Monitoring Periodic Report**

Kinley Creek B (October 19, 2022 - December 6, 2022)

Explanation of Statistics:

MINIMUM OBSERVED	The minimum of the values recorded by the datasonde in 15 minute intervals.
MAXIMUM OBSERVED	The maximum of the values recorded by the datasonde in 15 minute intervals.
MEDIAN OBSERVED	The median of all the values recorded by the datasonde in 15 minute intervals.
MEAN OBSERVED	.
STANDARD DEVIATION	The standard deviation of all the values recorded by the datasonde in 15 minute intervals.

Sampled Data:

Analyte (units)	Sample 1		Sample 2					
	11/10/2022		11/10/2022					
	Time	Results	Time	Results				
<i>Escherichia coli</i> (MPN/100mL)	14:52	14,540	16:44	8,704				
Total Suspended Solids (mg/L)								
Total Phosphorus (mg/L)								
Total Nitrogen (mg/L)								

All samples were collected during wet weather conditions.

Notes:

Data Gaps

Turbidity and dissolved oxygen data was not collected during this monitoring period at KINB due to sensor repairs.

Potential Illicit Discharges and Abnormal Events:

Specific conductivity several times throughout the monitoring period, which may have been the result of illicit discharges.

Note: Data gaps appear when the sonde is removed for calibration or when the flow depth is below the sensors

REPORT GENERATED ON 1/30/2022