

Our Mission

To be the best in class at providing **clean, safe drinking water and dependable wastewater and stormwater services to customers in the greater Columbia area** while providing **excellent customer service and protecting the environment**



Washington Square

1136 Washington Street
Columbia, SC 29201



(803) 545-3300



customercare@columbiasc.gov



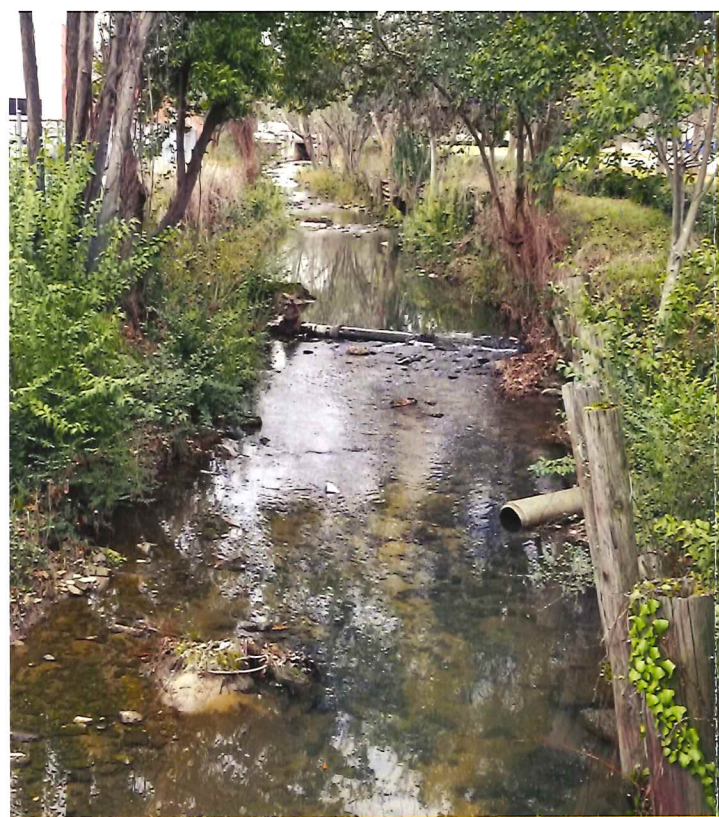
www.columbiascwater.net

Follow us @ColumbiaSCWater



**Columbia
Water**

Stormwater
Facts & Features

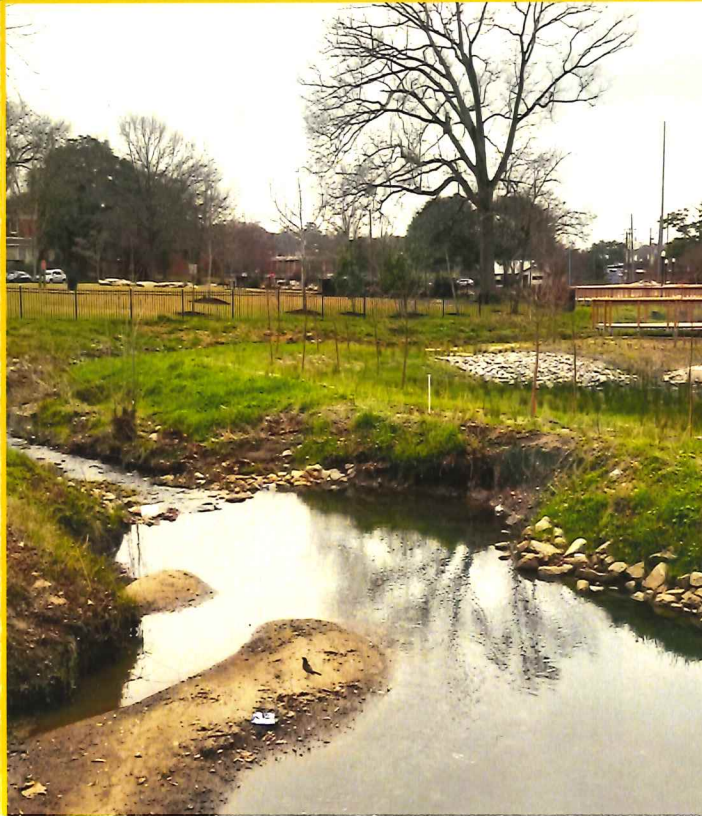


**TOGETHER WE CAN PROTECT
OUR WATER SYSTEMS BY
KEEPING OUR STORM DRAINS
FREE OF PET WASTE AND
HARMFUL CHEMICALS.**

ABOUT US

The Columbia Water Stormwater Management Team inspects issues and works to develop solutions to protect Columbia's waterways from harmful pollutants. Our team carefully watches and monitors the quantity and quality of stormwater before and after it enters our surface water. Our recent projects include redesigning stormwater features at Martin Luther King Jr. Park and Earlewood Park.

Learn more about our stormwater programs and projects at www.columbiascwater.net.



OUR PROGRAM

WHAT IS STORMWATER

Stormwater runoff occurs when rain or snowmelt flows over the ground. Impervious surfaces like sidewalks and streets prevent stormwater from naturally absorbing and settling. When water is carried into our storm drain, it travels directly to our rivers .

THE NPDES PROGRAM

The Environmental Protection Agency (EPA) developed the National Pollutant Discharge Elimination System (NPDES) to prevent stormwater runoff from washing harmful pollutants like pet waste, fertilizer, and pesticides into local watersheds which include rivers, lakes, and streams.

MS4 & THE PERMIT

The Department of Health and Environmental Control (DHEC) regulates stormwater programs throughout South Carolina. Columbia Water is considered a Municipal Separate Storm Sewer System (MS4). With the MS4 permit, Columbia Water works to monitor stormwater pollution throughout the city limits.

QUALITY & QUANTITY

Columbia Water monitors the quantity and quality of our stormwater runoff to meet the standards set by DHEC and the EPA. These standards help to protect our drinking water sources, reduce contamination, and safeguard the quality of our watersheds.